

River Habitat



655 Commercial Road
Limehouse
London E14 7LW

Contact:

T: 020 7791 9830

F: 020 7791 9831

Email: admin@riverhabitat.co.uk

Belgrave Court, 36 Westferry Circus, E14

Two Bedroom Apartment

£635 pw

rh-belgravecourt2998g-el

This particular flat of circa. 1,292 Sq. Ft. is located on the upper raised ground floor of Belgrave Court. With views directly due West and North West with ample ceiling height this two double bedroom property will appeal to the most discerning of clients. Its lounge of 22ft10 X 15ft2 easily accommodates a large dining table and champagne/breakfast bar. The master bedroom is ample with views directly up river at the crook of the river Thames



*** 1,292 Sq. Ft.**

*** upper raised ground floor**

*** Direct views of the River Thames**

A superb 2 bed, 2 bath flat at Belgrave Court, Canary Riverside with unparalleled direct views of the River Thames and easy access to Canary Wharf.

Situated at the top end of the River Thames's Greenwich Reach is a mixed-use development called Canary Riverside. The development is well known in the area as one of the most luxurious given the build quality of the apartments, the landscaped layout on the River Thames and the abundant amenities including a leading Fitness Centre Franchise, a five star hotel and numerous name brand restaurants.

A few minutes walk into Canary Wharf, Canary Riverside comprises four residential blocks named after London Squares: - Berkeley, Hanover, Eaton and Belgrave; a Holmes Place Gym with Olympic riverside pool and tennis court and a Four Seasons Hotel.

This particular flat of circa. 1,292 Sq. Ft. is located on the upper raised ground floor of Belgrave Court. With views directly due West and North West with ample ceiling height this two double bedroom property will appeal to the most discerning of clients. Its lounge of 22ft10 X 15ft2 easily accommodates a large dining table and champagne/breakfast bar. The master bedroom is ample with views directly up river at the crook of the river Thames while the second direct facing double bedroom makes a perfect study/guest bedroom.

•**Reception: 22ft10 X 15ft2**

Wooden flooring.

•**Kitchen:**

Has a separate breakfast room of 10ft3 X 6ft4 with Breakfast Bar. Slate Tile Flooring, fully integrated kitchen with all major appliances.

•**Master: 15ft X 13ft2**

Neutral carpeting.

•**En-suite:**

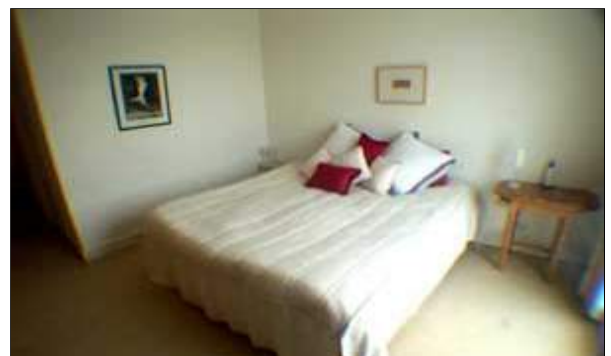
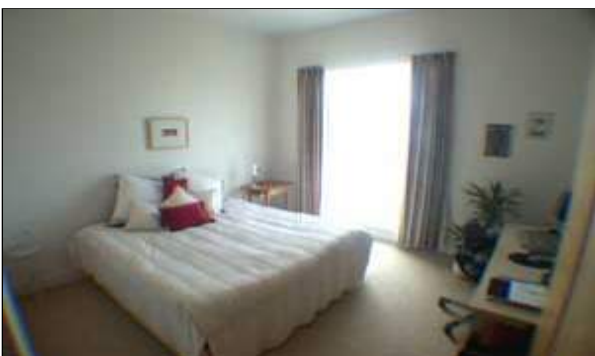
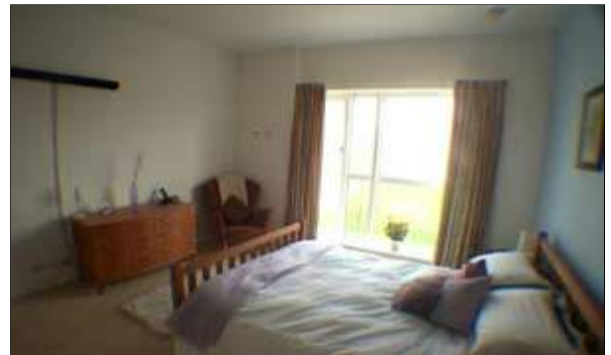
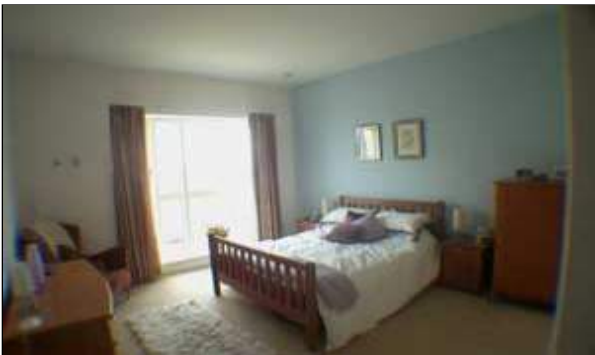
Under marble floor heating, His & Hers wash basin, separate shower/bath and shower cubicle.

•**Bedroom 2: 13ft1 X 11ft2**

Neutral carpeting

•**Bathroom:**

Fully tiled marble bathroom with three-piece suite including shower/bath, toilet and hand basin.



Important

River Habitat, their clients and any joint agents give notice that:

1. They have no authority to make or give any representations or warranties in relation to the property. These particulars do not form any part of an offer or contract and must not be relied upon as statements or representations of fact.
2. Any areas, measurements or distances are approximate. The text, photographs and plans are for guidance only and are not necessarily a complete representation of the property. It should not be assumed that the property has all necessary planning, building regulations or other consents and River Habitat have not tested any services, equipment or other facilities. Purchasers must satisfy themselves by inspection or otherwise.

