

WETHERELL

MAYFAIR'S FINEST PROPERTIES

No-one knows Mayfair better than Wetherell

Mount Street

MAYFAIR W1



Third Floor Flat (1143 sq ft) in Mayfair Village
between The Connaught Hotel & Scott's Restaurant

£1,300,000

SOLE AGENT



102 Mount Street · London · W1K 2TH

T: +44 (0) 20 7529 5566 F: +44 (0) 20 7629 9303

E: sales@wetherell.co.uk wetherell.co.uk

Wetherell & Co. (Mayfair) Ltd T/A Wetherell

Registered in England & Wales · Co. Registration No: 2651793 · Registered Office: 102 Mount Street, London, W1K 2TH · VAT No: 577 0428 25



MOUNT STREET

MAYFAIR W1

Midway between the rejuvenated Connaught Hotel and Scott's Restaurant, a third floor flat in this archetypal Mayfair building dating from the late 1800's.

Of particular note is the south facing, double Reception Room with Venetian window offering a glimpse of the Mount Street Gardens.

- * Entrance Hall
- * Reception Room with Dining Area
- * Kitchen
- * Two Bedrooms
- * Bathroom
- * 1143 Square Feet

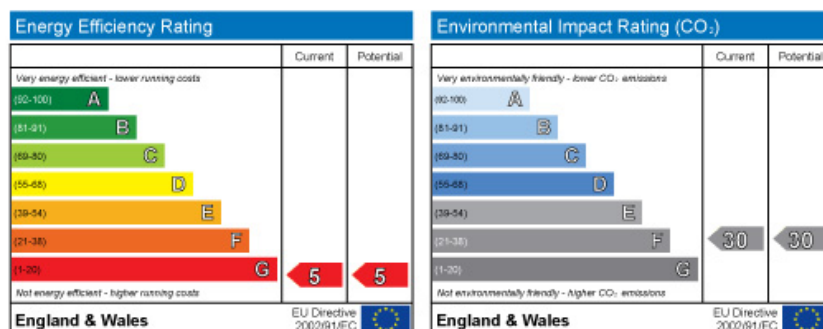
Tenure: Leasehold, approximately 27 years unexpired

Ground Rent: £350 per annum

Service Charge: To Be Advised

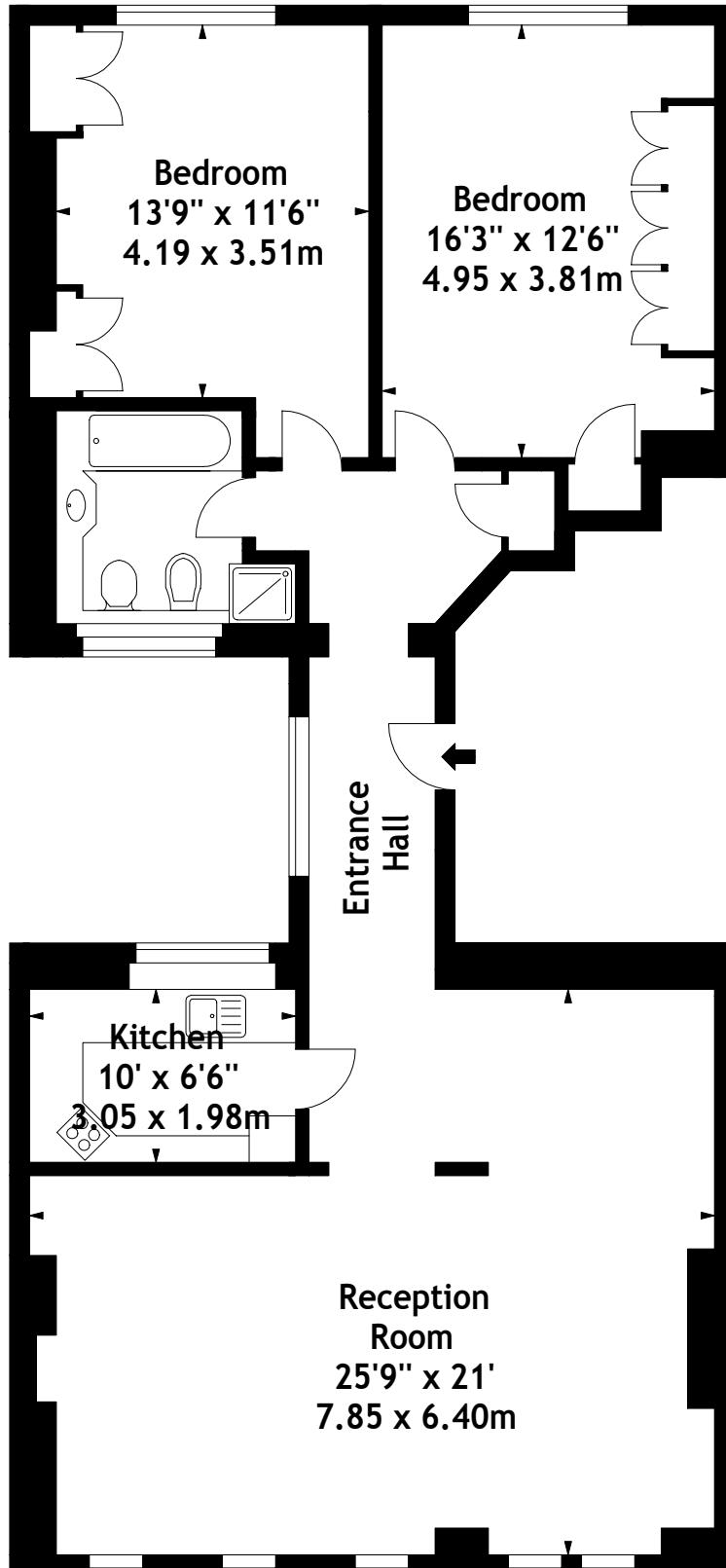
n.b. The vendor is negotiating terms for a lease extension

Price: £1,300,000



Wetherell & Co have no authority to make or give any representation or warranty whatever in relation to this property. These particulars do not form part of any offer or contract nor be relied upon as statements or representations of fact. All statements contained in these particulars as to this property are made without responsibility on the part of the agent. Any areas, measurements or distances, text, photographs and plans are for guidance only and are not necessarily comprehensive. It should not be assumed that the property has all the necessary planning, building regulation or other consents and Wetherell have not tested any services, equipment or facilities. Purchasers must satisfy themselves by inspection or otherwise. Details Prepared August 2008

Mount Street, W1
Approx. Gross Internal Area
1143 Sq Ft - 106.18 Sq M



Third Floor

Measured in accordance with RICS guidelines. Every attempt is made to ensure accuracy, however all measurements are approximate. This floor plan is for illustrative purposes only and is not to scale.

© Datography UK Ltd 2008

Photographs * Floorplans * Virtual Tours
Tel: 08707 66 30 30 www.datography.com